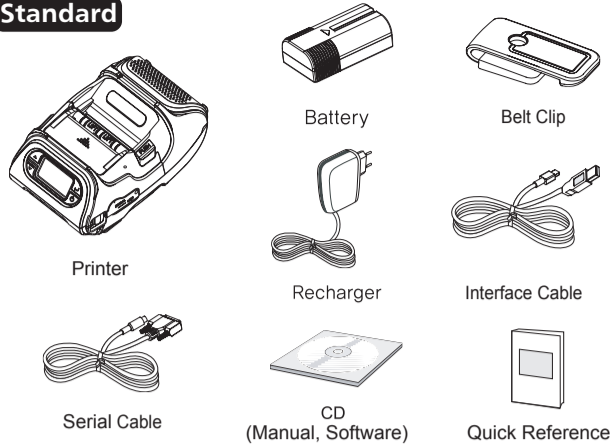
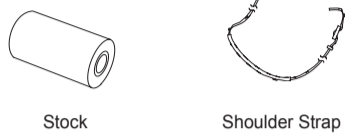


## 1 / Unpacking

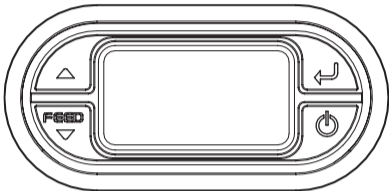
### Standard



### Option



## 2 / Display



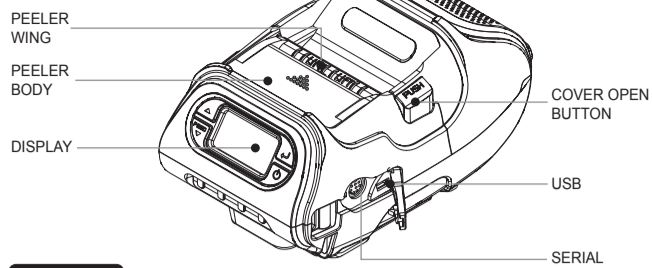
Button	Name	function
	Paper Feed / Down button	Advances the supply. Clears error message. Moves down through menu options.
	Enter button	Selects the highlighted menu option.
	Up button	Moves up through menu options.
	Power button	Turns the printer on and off. Press for two seconds to turn power on. Press for three seconds to turn power off. Wakes the printer from sleep mode.

### NOTE

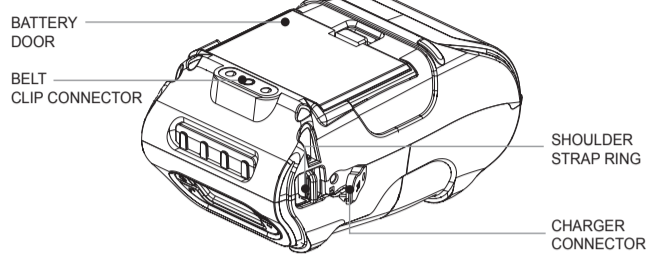
- The battery status LEDs indicate amount of power remaining. Actual run-time remaining depends on factors such as the contents of output, distance to computer, etc.
- When the battery level is very low, high density printing can result in the printer switching off during printing resulting in possible loss of data.

## 3 / Printer Appearance

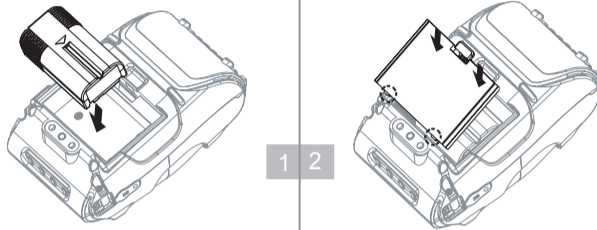
### Front



### Bottom



## 4 / Installing the Battery



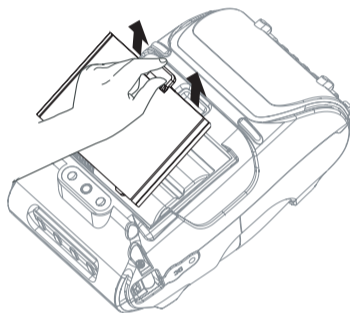
Remove the battery door. Insert the battery as shown.

Replace the battery door.

### NOTE

You must fully charge the battery when you receive the printer. Batteries can be charged in the printer or in an optional external cradle.

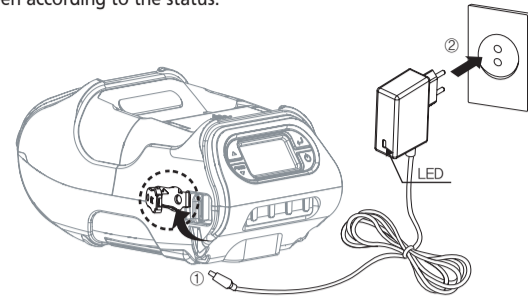
## 5 / Removing the Battery



Remove the battery door. Lift out the battery.

## 6 / Charging the Battery

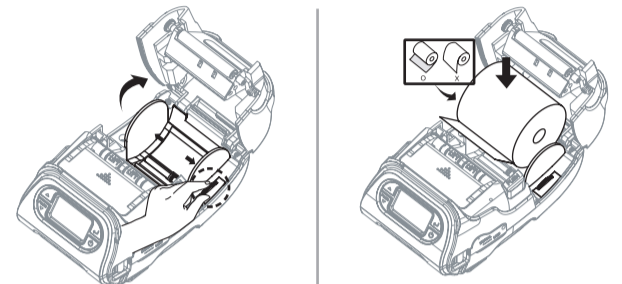
- Turn off the printer.
- Be sure that the AC plug is correct. If AC plug is wrong, change the plug to the correct one.
- Open the DC jack by pulling on the rubber cover and insert DC jack into the printer.
- Plug the AC plug into an electrical outlet.
- The charge indicator LED (located on the AC charger as shown) shows red or green according to the status.



### NOTE

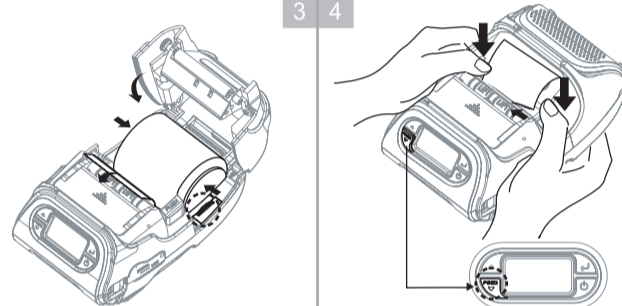
If there is trouble while charging the battery, the charge indicator LED blinks green. Try unplugging and reconnecting charger, charging should resume. Charging is complete when the LED changes to solid green.

## 7 / Stock Installation



Open the Paper cover by pressing the Open button and set the width of paper guide by turning the knob with finger.

Put the stock in so it unrolls from the bottom. Remove the stock core when it is empty. Pull a short length of stock out of the printer.

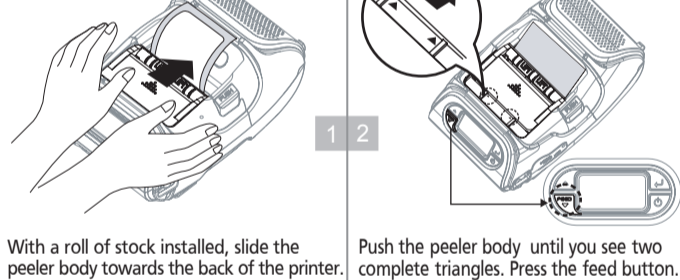


Adjust the width of paper guide if needed.

Use two hands to close the cover until it clicks into place. Press the feed button.

## 8 / Peel Mode

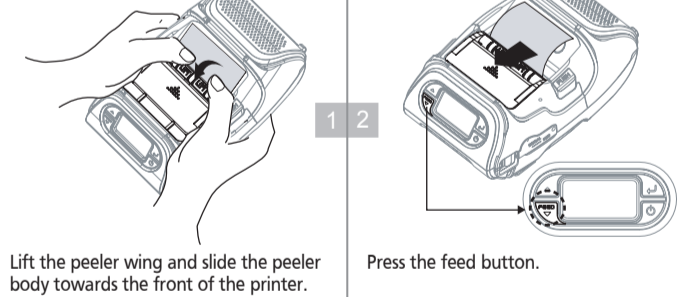
### Peeler Mode



With a roll of stock installed, slide the peeler body towards the back of the printer.

Push the peeler body until you see two complete triangles. Press the feed button.

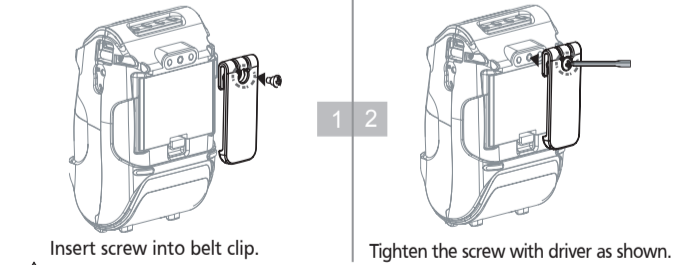
### Non-Peel Mode



Lift the peeler wing and slide the peeler body towards the front of the printer.

Press the feed button.

## 9 / Installing Belt Clip



Insert screw into belt clip.

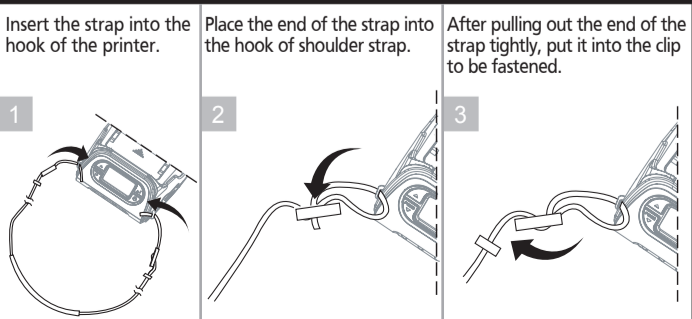
Tighten the screw with driver as shown.

### NOTE

The belt clip is included with the printer but is not required to be used or installed!

## 10 / Shoulder Strap Installation

### Optional



Insert the strap into the hook of the printer.

Place the end of the strap into the hook of shoulder strap.

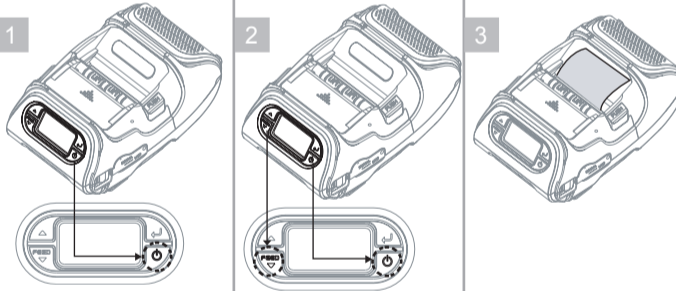
After pulling out the end of the strap tightly, put it into the clip to be fastened.

## 11 / Diagnostic Test

Turn off the printer.

Press and hold the feed button and power button.

The information label prints.



### NOTE

- For Hex Dump mode, do steps 1-2 then press the feed button.
- After printing ASCII pattern, the diagnostic test is complete.
- If the feed button is not pressed to go to Hex Dump mode, the printer exits diagnostics after three seconds.

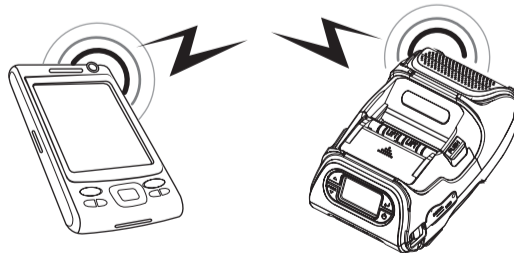
Upon initial installation or for troubleshooting, you can run the diagnostic test to get information about:

Firmware version, emulation, codepage, sensor settings, interface settings, etc. If no issues are found with diagnostic test, examine other devices and software. The diagnostic test is working independent of devices and software.

### Do not overheat the motor

To prevent the motor from overheating, stop the printer for at least 30 seconds after continuously printing 1.5 meters.

## 12 / Wireless communication

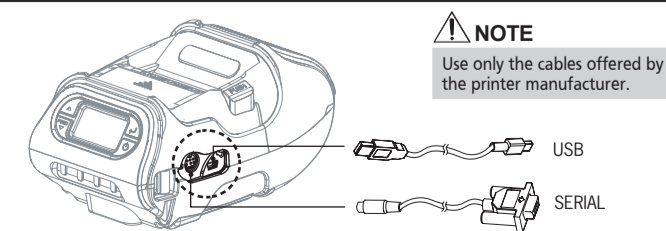


1. Printer can connect to a PDA or PC for wireless communication.

2. Your PC must support Bluetooth or WiFi (802.11b/g) to connect to the printer

**NOTE** Refer to the System Administrator Guide for more information

## 13 / Interface Cable Connection



### NOTE

Use only the cables offered by the printer manufacturer.

1. Connect the USB or Serial cable to the cable connector on the printer.

2. Connect the interface cable into the USB or Serial port of the device (PDA, PC, etc.)

# Quick Reference

## Monarch® 9485 Portable Printer

