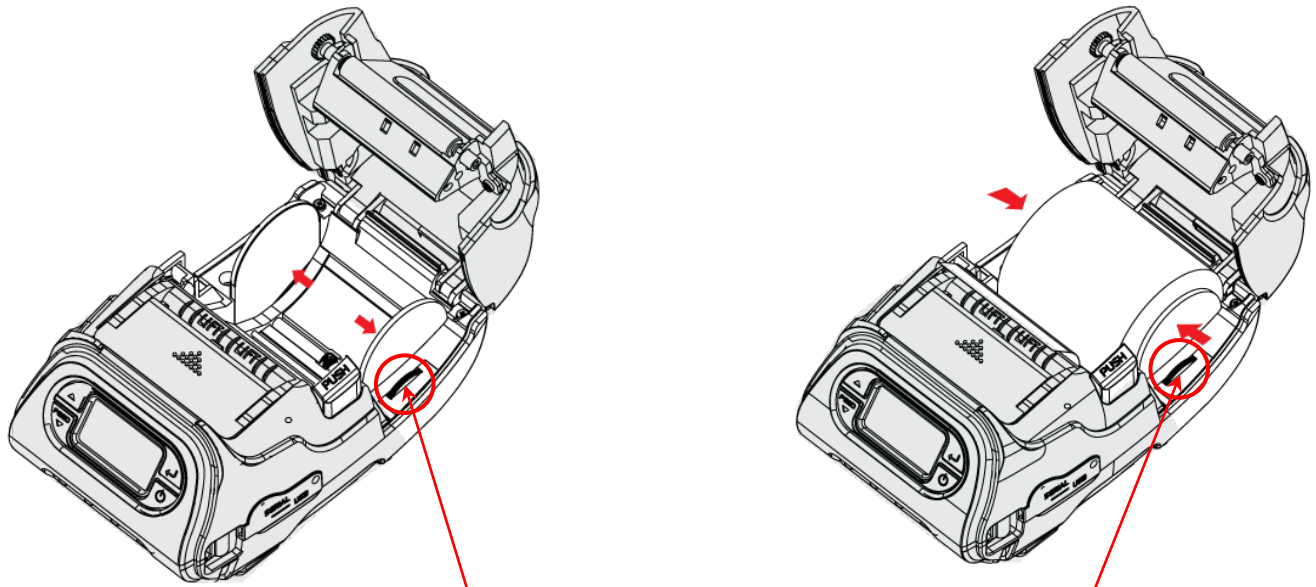


PEELING & TEARING SUPPLIES

Use these instructions with your Monarch® 9485 printer. For more information, refer to the *User's Manual*.

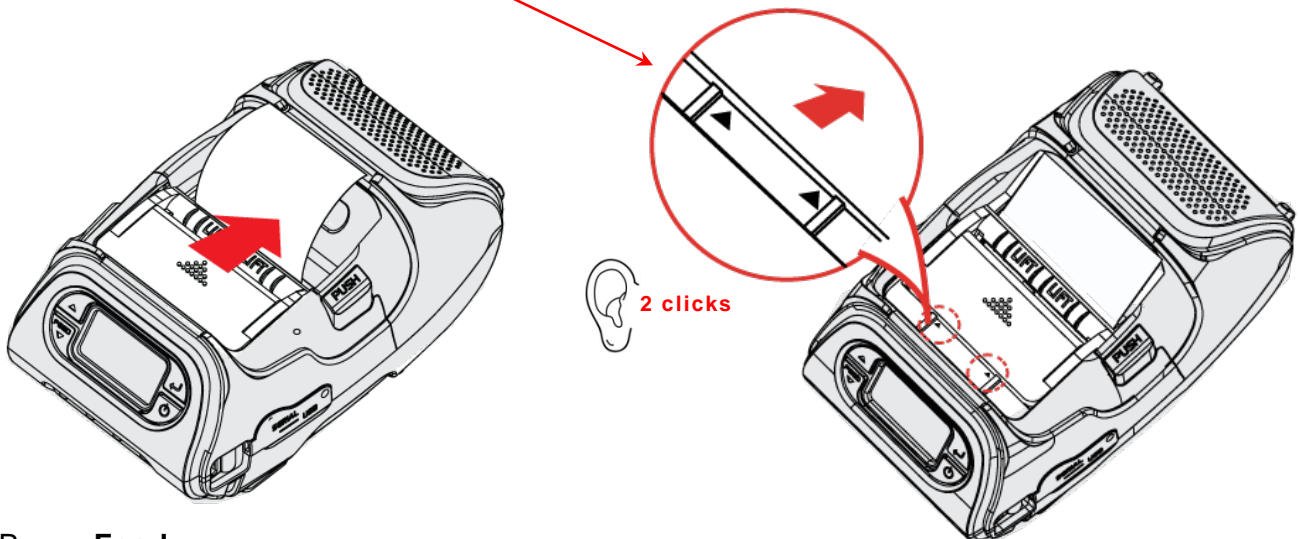
Note: When loading supplies, set the paper width guide correctly:



Turn the paper width guide with your finger until the supply guides touch the edges of your supply.

Loading Supplies for Peel Mode

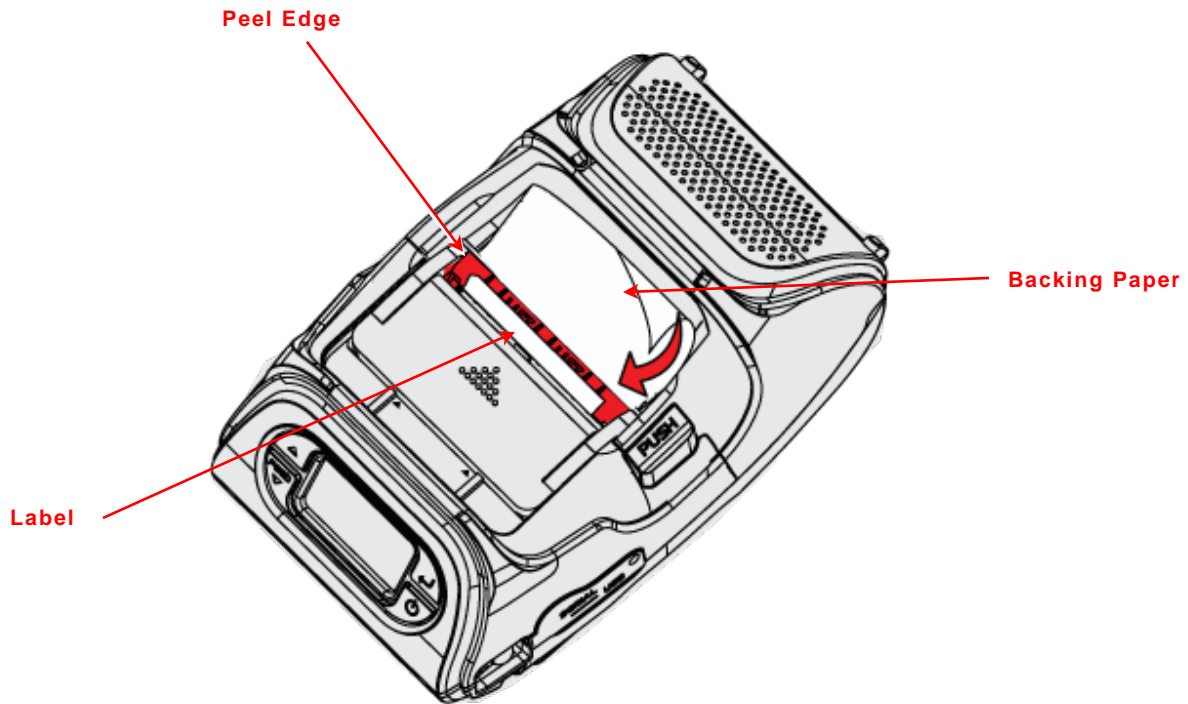
1. With supply loaded, slide the peeler body in the direction shown until you **hear two clicks** and see **two complete triangles**.



2. Press **Feed**.

Tearing Supplies

Tear the backing paper (liner) towards the front of the printer against the peel edge (shown in red); either in a left-to-right or right-to-left motion.



Note: Do NOT pull the backing paper out of registration.