



**AVERY
DENNISON®**

SNAP Printer Ethernet Configuration



AVERY DENNISON

**27 March 2009
Version 1.0**

Overview

The SNAP Printers offer Ethernet communications as a standard feature. This allows the user to attach a SNAP printer to their network and send formats and data over the network. Network communications offer significant advantages, including sending data from a remote location and significantly increased download speed.

The SNAP printer must be configured to each specific network. The printer's IP address, Sub Mask and Gateway must be set up to work on the network. Contact your network administration to determine the values for your specific network.

The SNAP printers offer two ways to set up the network configuration. Interactive Configuration is the easiest, but it requires connecting a monitor and keyboard to the printer. The Configuration File method requires a host computer or laptop running PCMate Platinum and a serial connection to the printer.

Interactive Configuration

In order to use the Interactive Configuration, you must connect a monitor and keyboard to the printer. These are the same standard PC components that are used on desktop PCs.

Connecting the Monitor and Keyboard to the Printer

1. Turn the printer off.
2. The connector panel is located on the back right of the printer. Connect the monitor to the video connector. This connector looks similar to the serial port connector, but it has 3 rows of pins instead of 2.
3. Connect the keyboard to the keyboard port. There are two round connectors at the far left of the connector panel (looking at the back of the printer). The keyboard connector is the bottom one.

Accessing the Interactive Configuration Menu

1. Turn the monitor and printer on.
2. The printer initialization will appear on the monitor. When the message “Press F1 for Setup” appears, press the F1 key on the keyboard. A window will appear asking for a password. Enter **IP** followed by the Enter key

NOTE

Entries are not case sensitive. All commands may be entered in either upper or lower case.

3. A menu of commands will appear. Each command may be used to either view the current setting or enter a new setting.
4. To view the current setting, simply enter the command followed by the Enter key. The current value will be displayed.
5. To enter a new value, type the command followed by the value, then press the Enter key. For example, to set the IP address to 168.1.1.0, type **IP 168.1.1.0** and press the Enter key.
6. If at any time you need to refresh the command list, type **HELP** followed by the Enter key.
7. The SMTP address is for email, which is not implemented in current versions.
8. The TCP/IP value must be set to **ENABLED**.

Using the Configuration File

If it is not possible to use the Interactive Configuration, it is possible to use the Configuration File to change the settings.

The printer stores the Ethernet configuration in a file named TCPIP.CFG. This is a text file that contains the following (values shown are the values that are set when the printer is shipped):

```
ENABLED=FALSE;  
IP=192.168.1.10;  
MASK=255.255.255.0;  
GATEWAY=0.0.0.0;set to zero if not  
required  
SMTP=0.0.0.0;
```

This file may be created using a text editor, or the template file can be downloaded from the D2Comm In-Plant Printing Solutions web site at d2comm.Paxar.com. To download the file:

1. Click on **Tech Support** along the left side of the page.
2. Click on **Tools**, then click on **SNAP Ethernet Configuration File**.
3. Right click on **TCPIP.CFG**, then select **Save Link As...** from the drop down menu.
4. Navigate to the folder where you want to save the file, then click on **Save**.

Edit the file to include the correct IP, Mask and Gateway addresses and save the file.

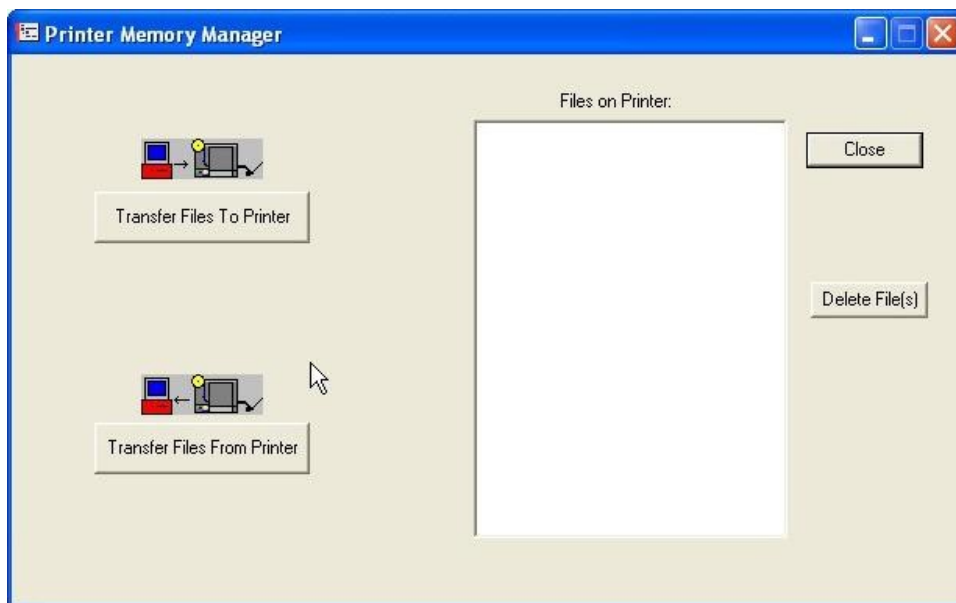
There are two methods for downloading the file to the printer. PCMate Platinum includes the Printer Memory Manager utility that allows files to be downloaded to the printer. Alternately, the file can be converted to an upgrade file and PCMate Platinum used to upgrade the printer.

Using Printer Memory Manager to Download the File

1. Start Printer Memory Manager by clicking on the Windows Start button, then selecting **All Programs – PCMate Platinum – Printer Memory Manager**.
2. The following window will appear to allow selection of the COM port and settings for communicating with the printer. Select the COM port to which the printer is connected, the baud rate (default is 115,200 baud) and XON/XOFF handshaking. Then Click the **Connect** button.



3. The following Window will appear:



4. In the **Files on Printer:** box will be a list of files already stored on the printer. **Click the Transfer Files To Printer** button. A File Open window will appear. Navigate to the folder containing the TCPIP.CFG file and select it, then click the **OK** button. The file will be transferred to the printer and will appear in the **Files on Printer:** box.
5. Click the Close button to exit Printer Memory Manager, then turn the printer off and back on the install the new Ethernet configuration.

Using the Upgrade Method

1. Open a Windows Explorer window. Navigate to the folder containing the TCPIP.CFG file.
2. Right click on the filename, then select the **Send To – Compressed (Zipped) Folder**.
3. A new file will appear in the folder named TCPIP.ZIP. Right Click on this file and select **Rename**.

NOTE

If the ZIP extension is not displayed, click on the Tools menu item, then select Folder Options. Click on the View tab, then under Advanced Options, uncheck the box next to Hide Extensions for Known File Types. Then click OK to return to the Explorer window.

4. Rename the file to TCPIP.UPG, then press the ENTER key.
5. Copy the file TCPIP.UPG to the c:\D2Comm\Control folder.
6. Start PCMatePlatinum. A window will appear indicating that there is an upgrade available. Click **Yes**.
7. The upgrade window will appear. Click on Start Upgrade and wait for the upgrade to complete. Detailed instructions about the upgrade procedure can be found in the printer's Users Manual.